



ROCKWOOL Insulation contribution

– to DGNB DK certified buildings



How ROCKWOOL stone wool contribute to your certification

The construction materials used in your building can have a large impact on your certification. In order to earn points it is important to choose materials that meet certain criteria within health, safety and the environmental impact throughout their life cycle.

In this document we have highlighted all areas where you are awarded points when using ROCKWOOL solutions. All relevant documentation needed to complete your certification scheme can be found in our documentation assistant: docassist.rockwool.com.

At ROCKWOOL, we transform volcanic rock into stone wool products that address many of society's biggest climate challenges. Our hope is that our solutions can help enrich modern living so that we can build safer, healthier, and more climate resilient communities that can stand the test of time. For more than 80 years we have delivered quality insulation to buildings all around the world and our durability is well documented. Even after more than 65 years, our products perform as well as the day they were installed.



Reference document:

DGNB – Nye bygninger og
omfattende renoveringer 2023
Ver: 1.0.0

October 7, 2022

Approved: CJK
Market scope: DK

Product scope: ROCKWOOL insulation
products

Documentation Assistant

To support your documentation requirements, ROCKWOOL has collected all available sustainability documentation on docassist.rockwool.com for direct download as full packages or a single files.

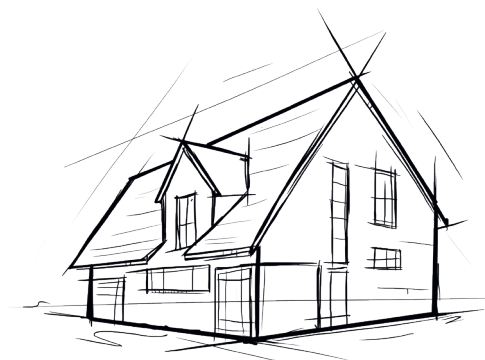
Documentation for download	DGNB categories	
Retursystem-Byggepladser Recycling – Construction site returns	PRO 1.4	Sustainability aspects in tender phase
	PRO 2.1	Construction site / construction process
	ENV 1.1	Building life cycle assessment
Retursystem-Nedrivning og renovering Recycling – Demolition/renovation returns	TEC 1.6	Ease of recovery and recycling
ROCKWOOL Håndteringsvejledning ROCKWOOL Safe handling instructions	PRO 2.1	Construction site / construction process
EPD Miljøvaredeklaration Environmental product declaration	ENV 1.1	Building life cycle assessment (LCA)
	TEC 1.8	Documentation with EPD
M1 Emissionscertifikat Emission classification	SOC 1.2	Indoor air quality
Sikkerhedsdatablad og ROCKWOOL indholdsdeklaration Safety data sheet and Supplier declaration	ENV 1.2	Local environment impact
DoP Ydeevnedeklaration Declaration of Performance	SOC 1.1	Thermal comfort
	SOC 1.3	Acoustic comfort
	TEC 1.1	Fire safety
	TEC 1.3	Quality of the building envelope
Genanvendt indhold Recycled content (listet in current document)	TEC 1.6	Ease of recovery and recycling

Support: tools, guides and technical service

ROCKWOOL offers a suite of tools and guides that can support the certification process, eg:

- ➔ Detail drawings (CAD)
- ➔ Installation guides
- ➔ Design guides
- ➔ Energy calculation programs
- ➔ Material calculators for roofs and systems

If you are missing any information, please reach out ROCKWOOL technical service (rwts@rockwool.dk), who will seek to guide you to the required information.



All guides and tools are free and can be downloaded directly via www.rockwool.dk

How ROCKWOOL stone wool insulation can contribute to DGNB across themes and criteria

DGNB Categories		Percentage of total score (variances according to building type)
Process quality	Categories and how ROCKWOOL products can support the DGNB process	
PRO 1.4	Sustainability aspects in tender phase Set sustainability requirements to building materials and suppliers eg: <ul style="list-style-type: none"> - Closed loop recycling. - No addition of flame retardants or biocides. - Full life cycle EPDs. - ISO 14001 certified production. 	1,9%
PRO 2.1	Construction site / construction process <ul style="list-style-type: none"> - Specify materials with documented recycling services - Specify insulation materials without hazard warnings. 	1,3%
Environmental quality		
ENV 1.1	Building life cycle assessment (LCA) ROCKWOOL 3rd party verified product specific EPDs are available via docassist.rockwool.com or at EPD-Norway. ROCKWOOLs EPDs are made according to the updated European standard EN 15804+A2:2019 and cover the full life cycle from cradle to grave. (A1-A5, C1-C4 and D). With our EPD generator we can make product specific EPDs per request. ROCKWOOL product range, on average, perform a 50% reduced greenhouse gas emission, throughout the lifecycle of the product, compared with the standardized database for ecological evaluation of building materials (ökobaudat).	9,5%

DGNB Categories		Percentage of total score (variances according to building type)
ENV 1.2	<p>Local environment impact</p> <ul style="list-style-type: none"> - Ensure that insulation installed in contact with indoor air is certified low emission eg. M1-certification - Request manufactures declarations regarding content of unwanted chemicals, REACH etc. 	4,7%
Economy quality		
ECO 1.1	<p>Life cycle cost</p> <p>ROCKWOOL stone wool is a durable product, that will continue to maintain a low energy consumption throughout the life span of the building and will maintain mechanical and thermal properties and thus fire resistance, more than 55 years after installation.</p>	9,6%
ECO 2.2	<p>Robustness</p> <p>ROCKWOOL stone wool with a constant lambda value, years after years. Rockwool stone wool insulation contributes to maintaining thermal comfort of any building and corresponding low operation energy requirements.</p>	6,4%
Social quality		
SOC 1.1	<p>Thermal comfort</p> <p>With a constant lambda value, year after year, ROCKWOOL stone wool insulation contributes to the thermal comfort of any building.</p>	3,2–4,2%
SOC 1.2	<p>Indoor air quality</p> <p>Stone wool insulation from ROCKWOOL intended for use inside the building envelope is certified low emission according to M1.</p>	3,2–4,2%
SOC 1.3	<p>Acoustic comfort</p> <p>ROCKWOOL stone wool has an open and porous structure, which allows the stone wool to absorb sound, dampen unwanted noise and is an excellent choice for use in sound insulation construction. ROCKWOOL Insulation products has a density in the range of: 27–300 kg/m³.</p>	0–3,8%
Technical quality		
TEC 1.1	<p>Fire safety</p> <p>ROCKWOOL stone wool is inherently non-combustible and can resist temperatures above 1,000°C and is a key component in designing a fire-resilient buildings. With minimal organic content and no added flame retardants, ROCKWOOL insulation will not produce any significant toxic smoke.</p>	1,9%

DGNB Categories		Percentage of total score (variances according to building type)
TEC 1.3	<p>Quality of the building envelope ROCKWOOL stone wool with a constant lambda value, years after years. Rockwool stone wool insulation contributes to maintaining thermal comfort of any building and low operation energy requirements.</p> <p>ROCKWOOLs product range contains insulation materials for large range of applications, with lambda values in the range 0,032-0,047 (W/m·K).</p> <p>A broad range of free energy optimisation tools are available for download via www.rockwool.dk, eg:</p> <ul style="list-style-type: none"> • U-value calculator . • Design details (Detaljtegninger). • ROCKWOOL designguide "Den lille lune". 	2,8%
TEC 1.6	<p>Ease of recovery and recycling The unique ROCKWOOL Rockcycle scheme, ensures ROCKWOOL stone wool insulation is one of the few insulation materials with an existing recycling service that secures that returned ROCKWOOL stone wool is recycled to new stone wool with identical or improved characteristics. (QL3).</p>	2,8%
TEC 1.8	<p>Environmental product declaration (EPD) ROCKWOOL 3rd party verified product specific EPDs are available via www.rockwool.dk. ROCKWOOLs EPDs are made according to the updated European standard EN 15804+A2:2019 and cover the full life cycle from cradle to grave. (A1-A5, C1-C4 and D).</p> <p>With our EPD generator we can make product specific EPDs per request.</p>	0,9%

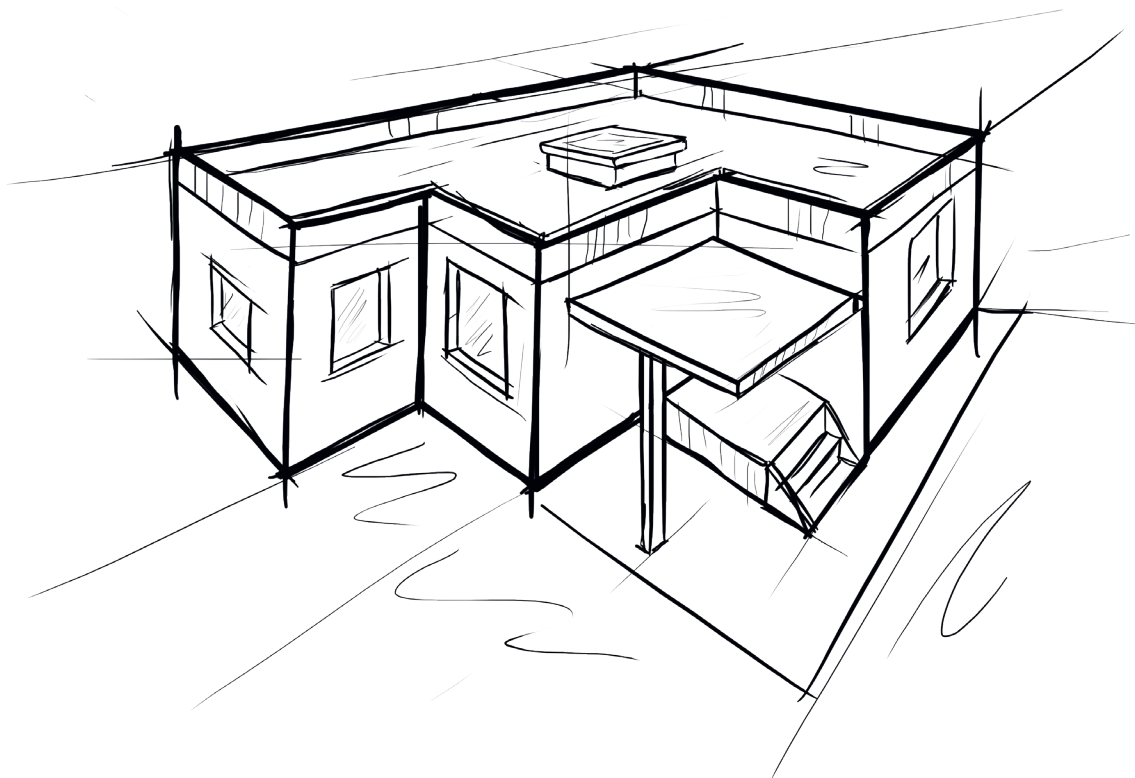
Disclaimer

This document has been compiled for use as supporting documentation for application for a building certification scheme. ROCKWOOL cannot not guarantee that the presented documentation document will be accepted by the certification owner.

Manufactures declaration:

Recycled content of ROCKWOOL stone wool insulation

The average ROCKWOOL stone wool product contains **22%** recycled content, of which **17%** is content is reclaimed pre-consumer and the remaining **5%** is post-consumer.



3516

Certificate no. 004-SDG-5-137



DANCERT

**DANISH TECHNOLOGICAL
INSTITUTE**

Dancert A/S
Gregersensvej 1
DK-2630 Taastrup
Phone +45 72202160
info@dancert.dk
www.dancert.dk
CVR no. DK-29512094

Dancert certifies that

Thermal insulation products for buildings - Factory made mineral wool products

delivered by

ROCKWOOL Danmark A/S

Hovedgaden 501
DK-2640 Hedehusene

and produced in the manufacturing plant(s)

AS ROCKWOOL, Vaerlegt. 56, Postbox 55, NO-1531 Moss

AS ROCKWOOL, Leangen Alle 1, NO-7044 Trondheim

ROCKWOOL Danmark A/S, Industrivej 9-11, DK-6580 Vamdrup

ROCKWOOL Danmark A/S, Rockwoolvej 2, Øster Doense, DK-9500 Hobro

complies with the requirements of

EN 13162:2012+A1:2015 Thermal insulation products for buildings - Factory made mineral wool (MW) products - Specifications

EN 13172:2012 Thermal insulating products - Evaluation of conformity

Keymark Scheme rules for thermal insulation, version 2.1 Insulation Keymark Scheme for Thermal Insulation Products, Revision 2.1, 23 september 2019

The conformity is assessed on the basis of the assessment activities described by Dancert's supplementary regulations for product certification for the actual product category.

The performance and/or classification of the products is specified at www.dancert.com

The certificate is valid from 05-05-2022 through 14-07-2023

The validity of the certificate can be verified at www.dancert.com

This certificate was first issued on 18-05-2002

For Dancert

Jørgen Baadsgaard-Jensen
CEO



PROD Reg. no. 7001

This PDF document is only valid if digitally signed by Dancert A/S

3521

Certifikat nr. 137-5



DANCERT

TEKNOLOGISK INSTITUT

Dancert A/S
Gregersensvej 1
2630 Taastrup
Tlf. +45 72202160
info@dancert.dk
www.dancert.dk
CVR nr. DK-29512094

Dancert attesterer herved at

Miljøledelsessystemet

hos

ROCKWOOL Danmark A/S

Hovedgaden 501
DK-2640 Hedehusene

på følgende adresse(r)

AS ROCKWOOL, Værlegt. 56, Postbox 55, NO-1531 Moss
AS ROCKWOOL, Leangen Alle 1, NO-7044 Trondheim
ROCKWOOL Danmark A/S, Industrivej 9-11, DK-6580 Vamdrup
ROCKWOOL Danmark A/S, Rockwoolvej 2, Øster Doense, DK-9500 Hobro

er i overensstemmelse med kravene i

DS/EN ISO 14001:2015 Miljøledelsessystemer - Krav og vejledning

Gyldighedsområde:

Udvikling, produktion, salg og levering af mineraluld

Certifikatet er gyldigt fra 05-05-2022 til 17-06-2024

Certifikatets gyldighed kan verificeres på www.dancert.dk

Certifikatet blev udstedt første gang 17-11-1997

For Dancert

Jørgen Baadsgaard-Jensen
Adm. direktør



DECLARATION

Code of Conduct for Suppliers to the ROCKWOOL Group

The ROCKWOOL Group is committed to running its business on ethically and environmentally-sound principles. The ROCKWOOL Group wishes to ensure that we act responsibly in accordance with ethical, legal and international standards of behaviour and we endeavour to continuously improve our social performance.

The ROCKWOOL Group supports the United Nations Universal Declaration of Human Rights and the ten universal principles defined in the UN Global Compact relating to human rights, labour environment and anti-corruption.

The ROCKWOOL Group expects suppliers to uphold similar standards, ideally described in a CSR policy. This Code is designed to explain our expectations to our suppliers in more detail.

Compliance with Applicable Laws and Standards

The ROCKWOOL Group expects suppliers to comply with all international, national and local laws and standards relating to employment, environmental, purchasing and manufacturing practises.

Employment Practices

The ROCKWOOL Group wishes to ensure that the working practices of our suppliers towards their employees regarding such issues as equal opportunities, Trade Union recognition and fair employment terms comply with or exceed national and internationally accepted standards. The ROCKWOOL Group expects all suppliers to strive towards reducing any potential risk to their employees and to provide them with safe and healthy working conditions.

No supplier must, under any circumstances, be involved in the use of child labour.

Environmental Practices

The ROCKWOOL Group expects suppliers to comply with the environmental standards and regulations relevant to their business and to practice sound environmental principles in their operations.

The ROCKWOOL Group has adopted the ICC “Business Charter for Sustainable Development – Principles for Environmental Management”, which identifies responsibilities, requires an Environmental Officer to be appointed, expects companies to have an Environmental Management System with specific 3 year plans and expects all new machinery to be environmentally risk assessed before coming into operation. The ROCKWOOL Group encourages suppliers to follow these principles.

Supply Chain Practices

The ROCKWOOL Group expects suppliers to enforce these guidelines towards their suppliers. ROCKWOOL also reserves the right to audit any sub-supplier.

ROCKWOOL Supplier Code of Conduct

ROCKWOOL INTERNATIONAL A/S Group Sourcing & Procurement

Purchasing Ethics

Employees of the ROCKWOOL Group, irrespective of their position in the organisation, will not accept any gift from any supplier (either directly or indirectly) that could appear to influence their decisions on sourcing and contracting issues.

The ROCKWOOL Group expects suppliers to ensure that employees, sub-suppliers and sub-contractors are not only aware of these guidelines, but are also committed to uphold the principles set out above.

Bribery

Bribery is defined as occurring when a person offers, gives or promises, directly or indirectly, any financial or other advantage to a private (e.g. business partner) or public industry (e.g. Public Official) in exchange for improperly performing a relevant function or activity. In addition, not only the act of bribing but also the act of being bribed is unacceptable defined as a person requesting, accepting or agreeing to accept a financial or other advantage, in exchange for improperly performing such a function or activity. The ROCKWOOL Group finds bribery unacceptable and expects suppliers to officially and explicitly take a stand against bribery.

Compliance

Compliance with these guidelines is seen as the basis of a good, constructive and professional working relationship between companies. Any deviation from these guidelines could detrimentally affect this relationship and the ROCKWOOL Group reserves the right to cancel the contract in case of any violation of this Code of Conduct.

Acceptance

By ticking off the acceptance box when registering as a supplier to ROCKWOOL Group, you agree to abide by this Code of Conduct.

You further accept that the ROCKWOOL Group is entitled to carry out audits with access to relevant information.



ROCKWOOL Danmark A/S

Hovedgaden 501

2640 Hedehusene

info@rockwool.dk

ROCKWOOL.dk

Brochuren begrænser: Brochuren giver en generel orientering om ROCKWOOL produkternes anvendelsesområder. Løsningerne viser ikke alle detaljer, der kan være nødvendige i projekteringsarbejdet. ROCKWOOL Danmark A/S kan ikke tage ansvar for de opnåede resultater ved brug af de forskellige produkter, da forbrugernes endelige anvendelse er uden for vores kontrol. ROCKWOOL Danmark A/S tager forbehold for eventuelle trykfej i brochuren.